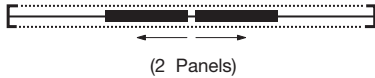


## Slimline Sliding Security Door Screens G1200 Series Type: Two Sliding Doors on One Track



**IMPORTANT:**  
TO ENSURE PROPER  
TENSION IN MESH,  
WE RECOMMEND  
MID-RAIL(S) FOR  
DOOR OVER 90"  
IN HEIGHT

**COLOR OPTIONS:**

- WHITE
- BLACK
- BROWN
- SAHARA BROWN
- LIGHT GRAY
- SILVER
- ALMOND
- BRONZE
- SAHARA GRAY
- ADOBE

**ACTIVE DOOR:**

- Left  Right

VISTA SECURITY SCREEN HANDLE HEIGHT@ \_\_\_\_\_  
(Add 4" to the Highest Point of the Glass Door Handle)

- PRE-CUT TRACKS AND JAMBS
- CUT 2-G50MA111 JAMBS @ \_\_\_\_\_
- CUT 2-G50MA163 TRACKS @ \_\_\_\_\_
- CUT 2 G50MA082 FINISH ANGLES @ \_\_\_\_\_

CUT 1-1X1X18 ANGLE @ \_\_\_\_\_

CUT 2 G50MA155 INTERLOCK @ \_\_\_\_\_

DOORS VIEWED OUTSIDE LOOKING IN

**ROLLER ADJUSTMENT:** Outside Inside

KEY ALIKE TO OTHER SLIDER FOR THIS JOB NAME

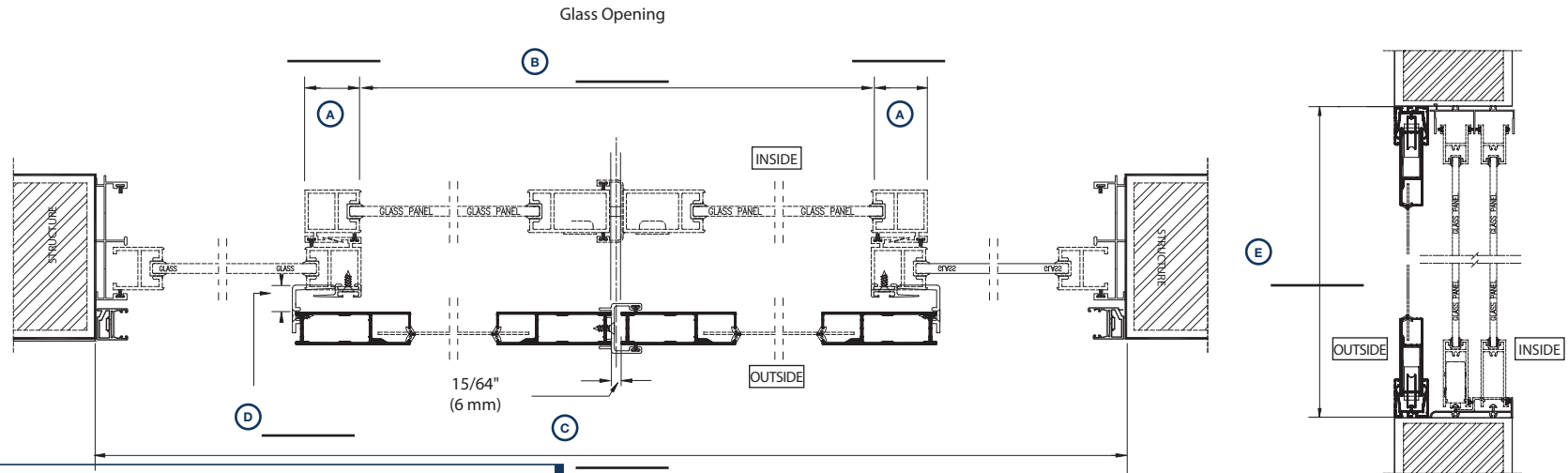
VISTA ACCOUNT NUMBER \_\_\_\_\_

JOB NUMBER/NAME \_\_\_\_\_ P.O. NUMBER \_\_\_\_\_

COMPANY NAME \_\_\_\_\_

ADDRESS \_\_\_\_\_ CITY \_\_\_\_\_

STATE \_\_\_\_\_ ZIP CODE \_\_\_\_\_ TELEPHONE \_\_\_\_\_

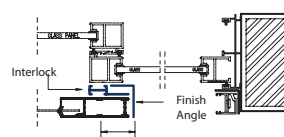


**Handle Height** measured from the bottom of mounting frame to center of handle pull. Thumb turn is 1-13/16" below the centerline of handle pull.

### FIELD MEASUREMENTS (A-E)

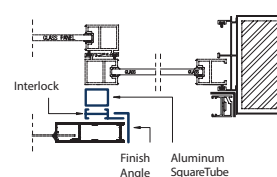
#### H CIRCLE INTERLOCK OPTION

1. Typical Interlock (G50MA155) and Finish Angle (G50MA082)

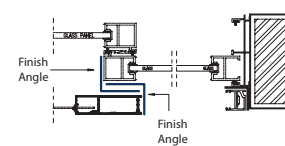


1-3/8" Back Edge of Door to Center of Interlock

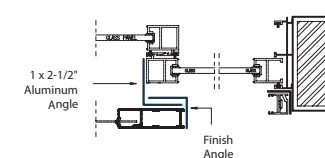
2. Typical Interlock (G50MA155) and Finish Angle (G50MA082) Using Aluminum Square Tube for Build Out.



3. Two finish angles (G50MA082) Recommend for Aluminum Patio Door Applications.



4. One G50MA082 Finish Angle and One 1 x 2-1/2 Aluminum Angle to Adjust for Build Out.



Doors are viewed outside looking in.